

Auto-Chlor
SYSTEM

D2C TimeSaver™

Double Rack • Corner • Low Energy • **WaterSaver™** Dishmachine



*Left corner model shown.
Also available for right corner*

- Auto-Chlor System's proprietary **WaterSaver™** design uses as little as .97 gallons per rack (1.94 per cycle)
- Powerful 1 HP pump delivers high pressure spray and mechanical cleaning action for single-pass cleaning performance
- Washes 74 dish racks per hour, up to 296 covers
- Built in water pressure regulator provides consistent water usage and cleaning results
- Exclusive fill-through-the-pump feature flushes and cleans the wash pump and spray system with every cycle
- External sump and screen provide easy access for cleaning
- Regularly scheduled 28-day service ensures sparkling results, minimizes mechanical problems and reduces operating costs
- Benefiting from more than 75 years of improvements and dishwashing experience and knowledge



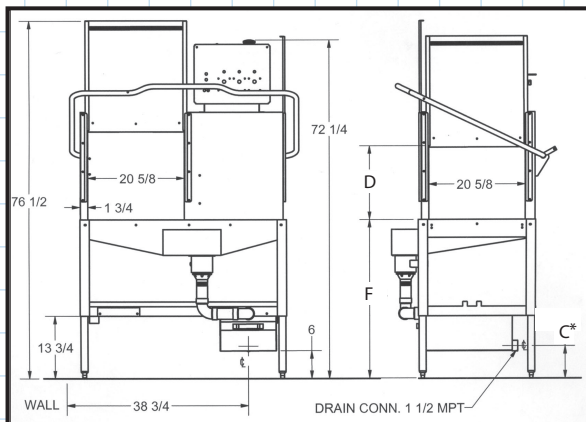
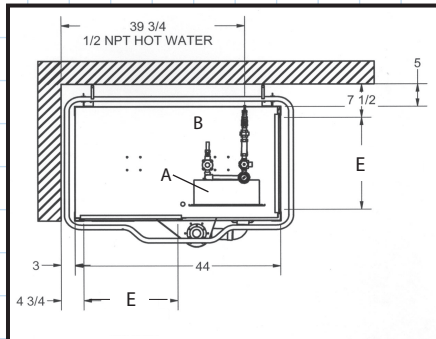
Energy Efficient

- Exceeds Energy Star requirements
- Low temperature chemical sanitizing saves energy
- No Booster Heater Required

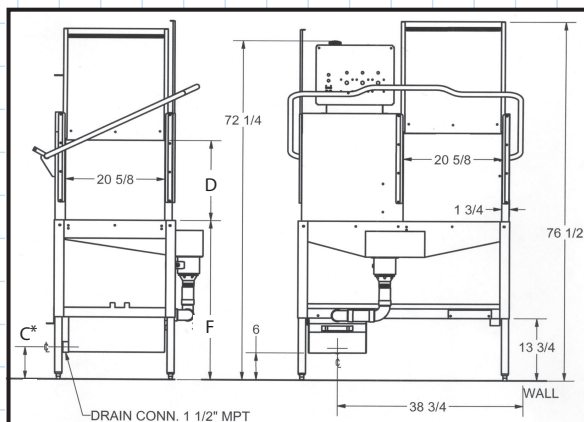
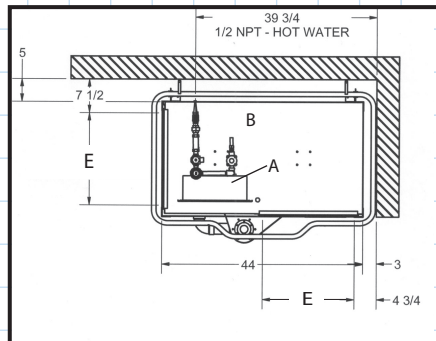
**Total Service.
Total Satisfaction.**

Auto-Chlor
SYSTEM
autochlor.com

LEFT CORNER MODEL



RIGHT CORNER MODEL



Specifications

Standard 90 second cycle, 74 Rack/hr

- A - Electrical -115 VAC, 60Hz, 1 PH
 - 20A Dedicated Circuit Recommended
 - Connects to Grounded Wall Outlet or 1/2" conduit depending on local building codes
- B - Water Consumption .97 gal/rack (71.8 GPH)
 - Water Supply Flow Rate 7.5 GPM Minimum
 - Water Supply Temp 140°F Recommended (120°F Minimum Water Temperature)
 - Water Supply Connection 1/2" NPT female
 - Backflow protection provided by ASSE 1001 Vacuum Breaker
- C - Drain Connection 2" MPT
 - 18 1/2" above floor
- C* - Optional Scrap Accumulator
 - Connection 2" MPT
 - Centerline 7" above floor
- D - Wash Cavity Clearance 17" Max Height
- E - Rack Clearance - 20 1/8" between tracks
 - Rack Size 20" x 20"
- F - Table Height at Machine Entrance 34"

Available Options:

- Auto-Start
- Vapor Removal System (VRX)
- 72 second cycle, 94 Racks/hr (91.2 GPH)
- 108 second cycle, 62 Racks/hr (60.1 GPH)

Note: This unit does not produce heat or steam

Total Service. Total Satisfaction.



ACM30010 (147/13)